


eltex

 electrostatic
innovations


Point charging bar R23ATR

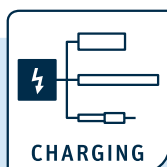
Special bar for edge zone fixation and narrow installation spaces

Adjustable tip geometry for targeted application of the desired charge. This configuration is advantageous, for example, for adhering small surfaces (labels).

Suitable for edge zone fixation in the film and foil production.

Advantages at a glance

- Point charging, even in narrow spaces
- particularly suitable for edge zone fixation
- Tips individually replaceable



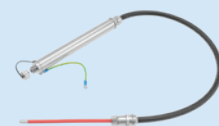
Suitable for connecting one or more Eltex charging components:



POWER CHARGER PC



HIGH-VOLTAGE
DISTRIBUTOR PCV/4



EXTENSION
CABLE KA/YY

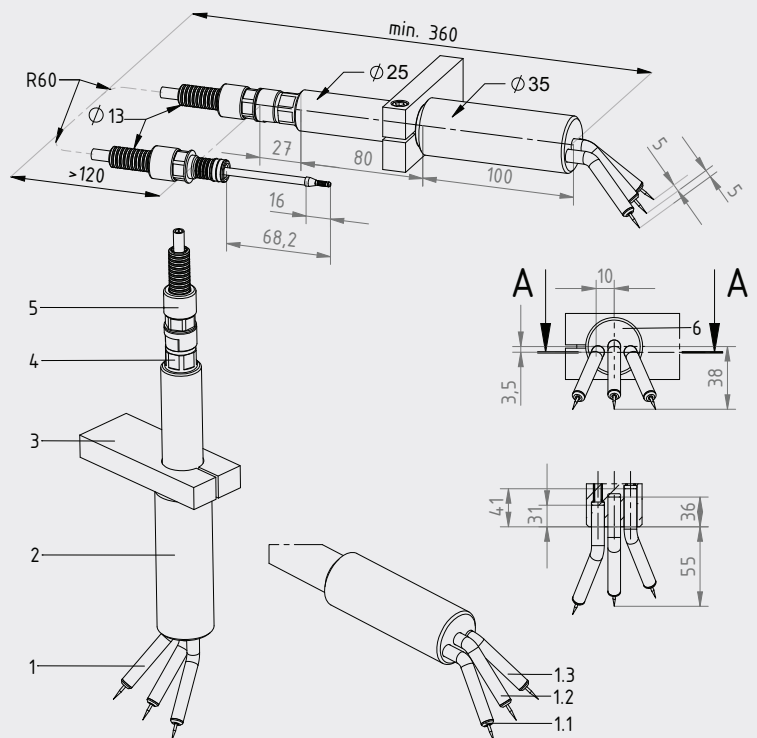


Point charging bar R23ATR

Technical Information

Bar element	PU, UL 94 V-0
Emission tips	R23ATR max. 3 emission tips R23ATR11 1 emission tip exchangeable, adjustable, with insulating coating, current-limited by separate resistors
Ambient operating temp.	0...+120°C (+32...+248°F) in emission tips area 0...+70°C (+32...+158°F) on bar element
Operating voltage	R23ATR max. 30 kV DC R23ATR11 max. 30 bzw. 60 kV DC
Dimensions	see figure

Dimensions



- 1 Emission tips
- 2 Bar element PU
- 3 GRP bracket for installation
(provided by customer)
- 4 Cable gland
- 5 Prefabricated high voltage cable for connecting
to the high-voltage generator
- 6 Hole diagram and mounting depth of the
emission tips